



USE AND CARE GUIDE

12 inch, 18 inch and 24 inch LED Task and Accent Light

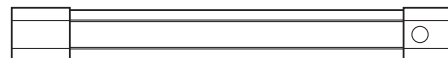


*For comments or replacement parts,
please write to: Feit Electric
Customer Service Department
4901 Gregg Road, Pico Rivera, CA 90660*

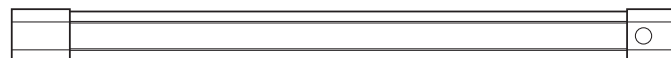


**BEFORE USING THIS PRODUCT,
READ, UNDERSTAND, AND FOLLOW
THESE INSTRUCTIONS.**

12 INCH - MODEL NO. 72060



18 INCH - MODEL NO. 72063



24 INCH - MODEL NO. 72065



Care Instructions

WARNING: To avoid the possible danger of an electrical hazard, always unplug the product from the electrical outlet before cleaning it.

To clean, use a soft cloth to wipe the product's surface. Do not use abrasive cleaners or solvents, as they may damage the product.

Tools Required



MEASURING TAPE



PHILLIPS
SCREW DRIVER



PENCIL

Save these instructions for future reference

Safety information

IMPORTANT SAFEGUARDS:

ALWAYS FOLLOW BASIC SAFETY PRECAUTIONS WHEN USING ELECTRICAL PRODUCTS, ESPECIALLY WHEN CHILDREN ARE PRESENT.

WARNING: To avoid the risk of electrical shock, always make sure the product is unplugged from the electrical outlet before assembling, disassembling, relocating, servicing, or cleaning it.

CAUTION

Do not attempt to install while plugged in. This fixture is for indoor use only. Not for use with plastic cabinets. Do not install this fixture inside of totally enclosed cabinets. Do not mount over stoves.

IMPORTANT SAFETY INSTRUCTIONS

This portable luminaire has a polarized plug (one blade is wider than the other one) as a feature to reduce the risk of electric shock. This will fit a polarized outlet only one way. If the plug does not fit fully into the outlet, reverse the plug. If it still does not fit, contact a qualified electrician. Never use an extension cord unless plug can be fully inserted. Do not alter plug.

Questions? 1-800-326-BULB

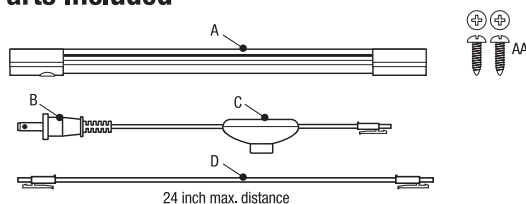


WARRANTY

Feit Electric warrants this lamp fixture to be free from defects in material and workmanship for a period of two years from the date of purchase. The warranty is limited to repair or replacement at Feit Electric's option. Damage caused by modification, abuse or misuse of this product is not covered. To receive warranty service, you must provide the original sales receipt and the defective product.

Feit Electric makes no other warranty expressed or implied of merchantability or fitness for a particular purpose. In no event shall Feit Electric be liable for special incidental or consequential damages. Some states do not allow limitations on how long an implied warranty lasts and/or do not allow the exclusion of consequential damages, so the limitations may not apply to you.

Parts Included



Part	Description
A	12in./18in./24in. LED Fixture
B	Electrical Plug
C	Master On/Off Switch
D	24in. Connector Cable
AA	1/2in. Mounting Screws

Linking Multiple Fixtures

This LED product can be linked together with a 24 in. connector cable (included) following the specifications included in the table below: 24 inch max. distance between each unit and 100 watts maximum load.

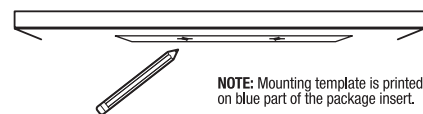
Item number	Description	Volts	Wattage per single Fixture	Input Current	Maximum Linkable
72060	12 inch LED Under Cabinet Task and Accent Light	120v	15w	180mA	6 pieces
72063	18 inch LED Under Cabinet Task and Accent Light	120v	24w	300mA	4 pieces
72065	24 inch LED Under Cabinet Task and Accent Light	120v	32w	410mA	3 pieces

Combinations of different lengths can be created provided that the total wattage of the fixtures does not exceed 100 watts. For example, the combination of one 12 in. strip (15w) and two 18 in. strips (48w) totalling 63 watts is acceptable.

Under Cabinet Installation Instructions



1. Position the Lamp

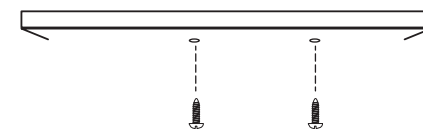


NOTE: Mounting template is printed on blue part of the package insert.

Find the desired place for the LED light fixture and mark clearly.

Place the fixture mounting template from the package insert at the desired location and mark screw position with a pencil.

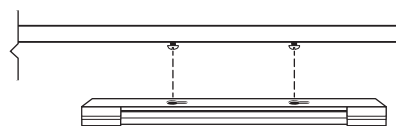
2. Installing Mounting Screws



Screw in both mounting screws on mounting surface where marked.

Do not screw in all the way. Leave space to accommodate fixture slots.

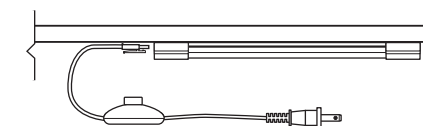
3. Installing Light Fixture



To secure the Fixture in place align holes on the back of the fixture to heads of screws.

Slide Fixture left or right to secure into place

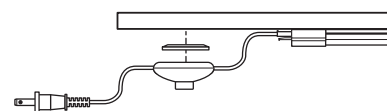
4. Connecting Power Supply



Plug in 5' power cord with master switch to the fixture (A). Plug in cord can be connected to either side of fixture.

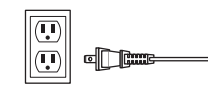
IMPORTANT: Do not plug in power supply unit to wall power until after connecting to fixture.

5. Installing Master Switch



Mount the master switch using adhesive mounting tape (pre-attached) on back of master switch.

6. Connecting to Power Supply



Connect power plug (B) to power outlet on wall.