

REVISIONS		
REV	DESCRIPTION	DATE
C0	CHANGED PER ECN 15-022	09/25/2015
B2	CHANGED PER ECN 15-015	08/13/2015
B1	CHANGED PER ECN 15-003	02/19/2015
B0	CHANGED PER ECN 14-014, 14-015 AND 14-021	11/04/2014
A0	RELEASE TO PRODUCTION	06/23/2014

**SAFETY STANDARDS COMPLIANCE:**  
 UL8750  
 UL1310

LVD EN61347-2-13  
 EMI STANDARDS:  
 FCC 47 CFR PART 15 CLASS B  
 CE EN55015, EN61547  
 EN61000-4-2,3,4,5,6,8,11

**SAFETY CERTIFICATIONS**  
 UL, cUL E357847  
 FCC A001E130624017E  
 EMC dir A001E121227003E  
 LVD A001E121227003S

SAFETY

**INPUT RANGE:**  
 110~277 VAC, 120~50mA @ FULL LOAD.

**FREQUENCY:** 60 Hz.

**EFFICIENCY:** 72 % min.

**PEAK INRUSH:**  
 10 AMPS @ 110V AC  
 20 AMPS @ 220V AC

**DIMMING:**  
 AC Phase - Trailing edge only

**POWER FACTOR:** 0.97 @ 120Vac

**LEAKAGE CURRENT:**  
 < 0.01mA @120VAC  
 Surge Immunity: 2.5K Vac

INPUT

LOAD CAPACITY:		4.8 WATTS	LOAD REG		MAX. RIP
OUTPUT	MIN	MAX	5%		2.4%
350mA	9V	12V			

OUTPUT

**COOLING:** CONVECTION

**NOISE LEVEL:** <24 dB (Doc A001E130422009K)

**RELIABILITY (MTBF):** (MIL-HDBK-217E)  
 100,000 HRS. @ 25 DEG. C @ FULL LOAD

**ENVIRONMENTAL CONDITIONS:**  
 OPERATING TEMPERATURE: -20 ~ 50°C  
 RELATIVE HUMIDITY: 5 ~ 95%  
 LOCATION: For Dry and Damp Use Only

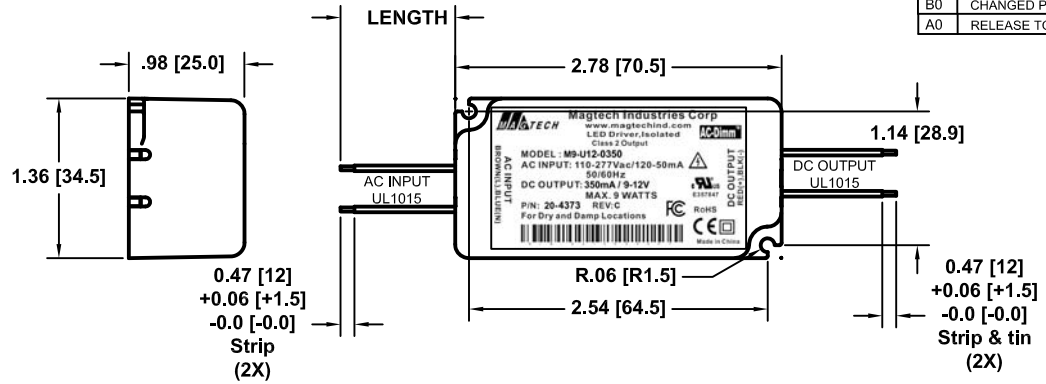
**CONNECTOR:**  
 N/A

MISCELLANEOUS

**PROTECTION:**  
 OCP,SCP,OVP  
 AUTO-RECOVERY

PF, THD AND EFFICIENCY CALCULATIONS ARE BASED ON THE LOADING OF THE DRIVER TO MINIMUM 65% AND MAXIMUM 100% OF 9W

- Notes:
- 1.- 5 yrs warr provided tc point remains below 75°C
  - 2.- Bar code defined by drawing 77-0120.
  - 3.- Transformer - Class 130 (B), Insulation system



CON	PIN	COLOR	OUTPUT	AWG	LENGTH
AC	IN	BROWN	LINE	20	6.5 [165]
		BLUE	NEUTRAL	20	
DC	OUT	RED	+V	20	± 0.5 [± 13]
		BLACK	GND	20	

MANUFACTURED BY:

THIS ITEM IS THE PROPERTY OF MAGTECH INDUSTRIES AND CONTAINS PROPRIETARY CONFIDENTIAL AND TRADE SECRET INFORMATION. THE INFORMATION CONTAINED HEREIN MUST NOT BE USED, DISCLOSED OR REPRODUCED IN WHOLE OR IN PART WITHOUT PRIOR WRITTEN CONSENT FROM MAGTECH IND.

QC:

TITLE: M9-U12-0350, 110~277VAC, 350mA, 9-12V, 5YRS

DO NOT SCALE THIS DRAWING	APPROVAL DATE: 06/25/2014	MODEL NO. M9-U12-0350	DWG NO. 20-4373	REV. CO	SH OF 1 1
INTERPRET DRAWING PER ANSI Y14.5M	EFFECTIVE DATE: 06/23/2014				